

neo.cortec

NEOCORTEC A/S
Nannasgade 28, 2.sal
2200 Copenhagen N
Danmark
http://neocortec.com

Title Eval. Board for NC2400

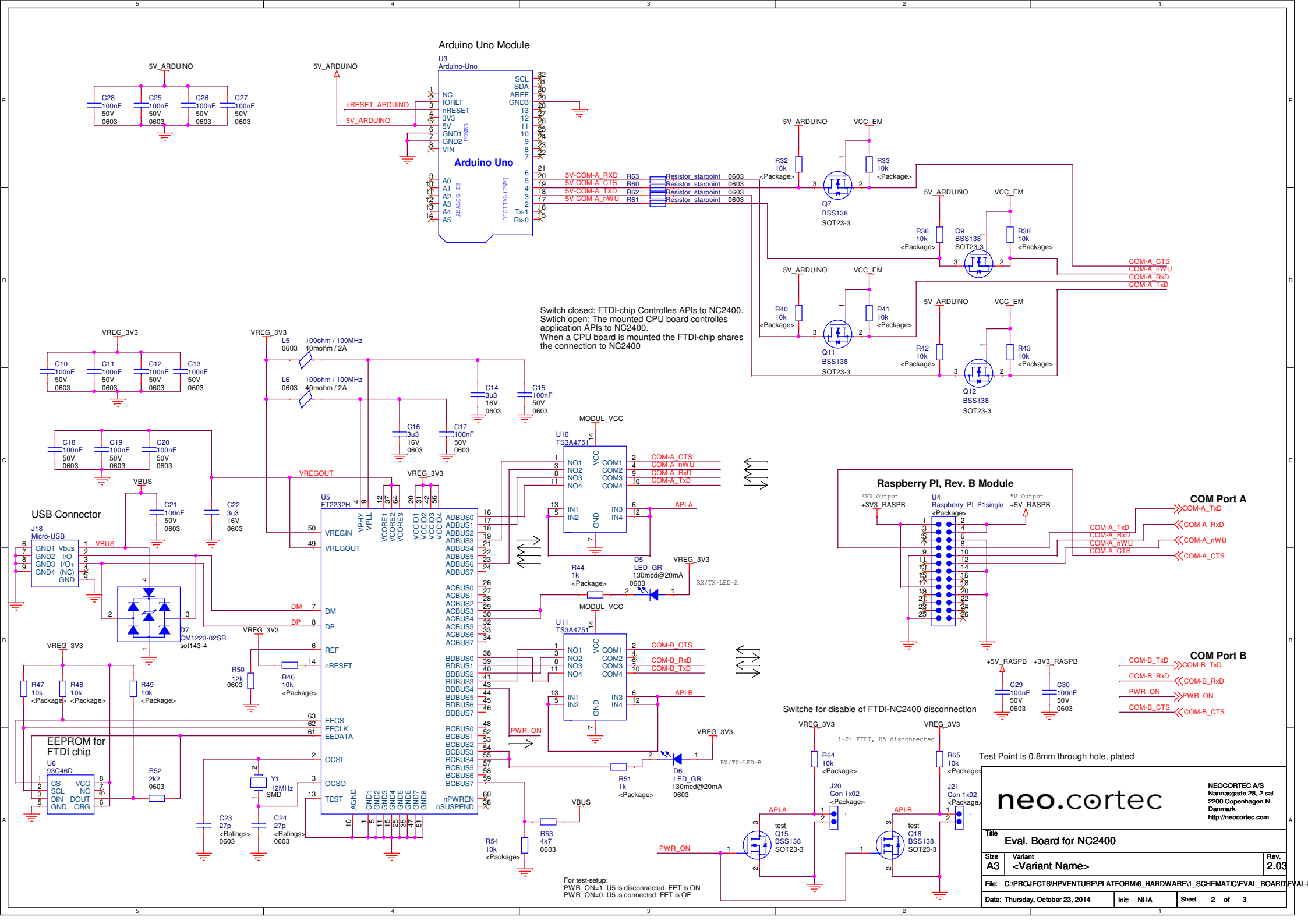
Size A3	Variant <Variant Name>	Rev. 2.03
---------	------------------------	-----------

File: C:\PROJECTS\SHIPVENTURE\PLATFORM6_HARDWARE1_SCHEMATIC\EVAL_BOARD\EVAL...

Date: Thursday, October 23, 2014

Init: NHA

Sheet 1 of 3



Switch closed: FTDI-chip Controls APIs to NC2400.
 Switch open: The mounted CPU board controls application APIs to NC2400.
 When a CPU board is mounted the FTDI-chip shares the connection to NC2400

Test Point is 0.8mm through hole, plated

neo.cortec

NEOCORTEC A/S
 Nannasgade 28, 2.sal
 2200 Copenhagen N
 Danmark
<http://neocortec.com>

Title: Eval. Board for NC2400		
Size: A3	Variant: <Variant Name>	Rev: 2.03
File: C:\PROJECTS\HPVENTURE\PLATFORM6_HARDWARE1_SCHEMATIC\EVAL_BOARD\EVAL...		
Date: Thursday, October 23, 2014	Init: NHA	Sheet: 2 of 3

For test-setup:
 PWR_ON=1: U5 is disconnected, FET is ON
 PWR_ON=0: U5 is connected, FET is OFF.

Revision	Changes
0.1	First draft
0.2	Added switch to power module down. Rewired FTDI COM ports
2.01	Changed API/debug interface, P5 Raspberry PI removed, Debug connectors removed and other changes
2.03	Testpoint removed, silkscreen updated minor changes.
0.5	

neo.cortec		NEOCORTEC A/S Nannasgade 28, 2.sal 2200 Copenhagen N Danmark http://neocortec.com
Title: Eval. Board for NC2400		
Size: A3	Variant: <Variant Name>	Rev. 2.03
File: C:\PROJECTS\HPVENTURE\PLATFORM6_HARDWARE\1_SCHEMATIC\EVAL_BOARD\EVAL-		
Date: Thursday, October 23, 2014	Init: NHA	Sheet 3 of 3